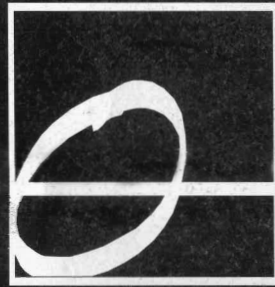


METALLICA

E



ORCHESTRA OF ST. LUKE'S

PERFORMING METALLICA COMPOSITIONS
ARRANGED & CONDUCTED BY

MICHAEL KAMEN

NOVEMBER 23, 1999
8:00 PM

MADISON SQUARE GARDEN

UNDER THE DIRECTION OF METROPOLITAN ENTERTAINMENT GROUP

METALLICA SELECTIONS

METALLICA

CALL OF KTULU
MASTER OF PUPPETS
OF WOLF AND MAN
THE THING THAT SHOULD NOT BE
FUEL
THE MEMORY REMAINS
NO LEAF CLOVER
HERO OF THE DAY
DEVIL DANCE
BLEEDING ME

-INTERMISSION-

NOTHING ELSE MATTERS
UNTIL IT SLEEPS
FOR WHOM THE BELL TOLLS
HUMAN
WHEREVER I MAY ROAM
THE OUTLAW TORN
SAD BUT TRUE
ONE
ENTER SANDMAN
BATTERY

METALLICA

LARS ULRICH-DRUMS ▶ JAMES HETFIELD-GUITARS & VOCALS ▶ KIRK HAMMETT-GUITARS ▶ JASON NEWSTED-BASS

Since they formed in 1981, San Francisco Bay Area band Metallica have gone from an underground heavy metal band to one of the most successful acts in the world, with an intensely loyal fan base.

Sales of Metallica albums (including 9 full length albums, and one EP) total over 65 million copies worldwide (with over 42 million coming in North America alone), and have earned gold and/or platinum certifications in over 40 countries. In addition, a live box-set release (containing over 8 hours of live music and video, retailing at over \$80), has sold over 600,000 units worldwide, making it the biggest selling box-set of its kind in history.

Metallica has garnered numerous awards and accolades throughout the world over their career, including 4 Grammy Awards, 2 American Music Awards, 2 MTV Music Video Awards and 26 California Music Awards.

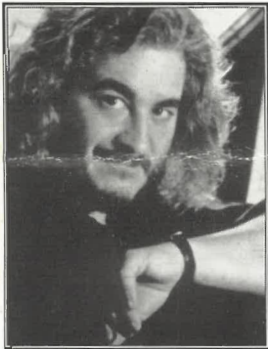
When it comes to touring, there are few, if any, bands who deliver live the way Metallica does. Their shows, which began in clubs and garages in the early 80's, are now selling out in arenas and stadiums throughout the world, and continue to be among the most intense, powerful and visually stimulating concert experiences ever delivered. The most impressive achievement that bears mentioning is the fact that Metallica continues to be a strong attraction in the touring world; a truly rare feat in today's mercurial entertainment business, where fans often change allegiance to bands as often as they do hairstyles.

Metallica is a band whose success can be directly attributed to a passion and no-compromise attitude in every project they undertake.



MICHAEL KAMEN

Michael Kamen has an illustrious musical career as a composer, artist, arranger and collaborator with the leading pop and classical performers of our day. Fusing traditional and modern genres in his diverse yet always recognizable voice, Kamen's work showcases his innate ability to break down musical barriers. In addition to orchestrating Metallica's classic *Nothing Else Matters* from their 1991 *Black* album, Kamen has worked with numerous artists including Sting, David Bowie, Eric Clapton, Pink Floyd, Pete Townshend, Bryan Adams, Aerosmith, Bob Dylan, Pavarotti and many others. As a producer/writer/arranger, he has been nominated for 9 Grammy Awards, winning 3, and 2 Academy Awards for his songs (*Everything I Do*), *I Do It For You* and *Have You Ever Really Loved A Woman*. His numerous film credits include "Mr. Holland's Opus" (which won a Grammy for best instrumental composition), *Robin Hood*, *Prince Of Thieves*, *Brazil*, all 4 *Lethal Weapon* films and all 3 *Die Hard* movies. From Kamen's lifelong love of music, came the Mr. Holland's Opus Foundation. A believer of music in our schools, Kamen founded the non-profit organization dedicated to music education by providing new and refurbished musical instruments to schools and individual students across the country. For his work, he won a NARAS "Hero of NY" Award.



Kamen is currently composing a Millennium symphony entitled *The New Moon in the Old Moon's Arms* commissioned by Leonard Slatkin for the prestigious National Symphony Orchestra. The work will debut at Washington DC's Kennedy Center in January 2000.

Kamen's adventures in music, in all its forms, from film scores to hit singles, from ballets to symphonies, leave pop and classical audiences alike eager to hear what Kamen will achieve next.

ORCHESTRA OF ST. LUKE'S

Celebrating its 25th anniversary, the Orchestra of St. Luke's is America's foremost, versatile chamber orchestra. It is one of the most highly visible and critically acclaimed ensembles in New York, recognized for its mastery of a diverse repertoire spanning the Baroque to contemporary periods. The Orchestra of St. Luke's evolved from the St. Luke's Chamber Ensemble, which was established in 1974. The Orchestra was first organized at the Caramoor International Festival in the summer of 1979, with Ensemble members forming the Orchestra's core as principal chairs and section leaders. The Orchestra's motivating energy derives from the players' shared love of music-making at the highest level with like-minded musicians. Sir Charles Mackerras is St. Luke's Music Director, succeeding Sir Roger Norrington, who served as its first Music Director from 1990-1994.

JOHN BRODERICK ▶ LIGHTING DESIGNER

John's 10-year tenure with Metallica has encompassed over 1300 performances, and his career has included a broad range of concert tours, television specials, film shoots, fashion shows and corporate work. A diverse roster of clients have used his services, including Madonna, Annie Lennox, Tom Waits, Pierre Balmain, Aerosmith, Hole, The Smashing Pumpkins, Yes and the Fox, CBS, USA and ESPN networks. All this has taken him to over 50 countries. Most recently, he designed the stage set and lighting for Madonna's opening appearance on the Grammy Awards.

He is a graduate of Colgate University and studied film at New York University. John is a vegetarian and heavily involved in animal rights.

METROPOLITAN ENTERTAINMENT GROUP ▶ PRODUCER

The Metropolitan Entertainment Group is a full service entertainment company offering expertise in concert promotion and production, national touring, management, and recording. At the heart of MEG is their Concert Division, which has been the creative force behind numerous historic musical events; including the Amnesty International Concert, Woodstock '94 and '99. MEG has coordinated national tours for Grateful Dead, Furthur Festival, Whitney Houston Tour '99, and Family Values Tours. Metropolitan Entertainment Group's reputation for quality events has firmly established the company as an industry leader, with more than 500 shows annually.

ORCHESTRA OF ST. LUKE'S

Sir Charles Mackerras—MUSIC DIRECTOR ▶ Marianne C. Lockwood—PRESIDENT & EXECUTIVE DIRECTOR ▶ Elizabeth Ostrow—DIRECTOR OF ARTISTIC PLANNING

VIOLIN

Concertmaster
Krista Bennion Feeney*
Mitsuru Tsubota*
Robin Bushman
Karl Kawahara
Anca Nicolau
Robert Shaw
Susan Shumway
Martin Agee
Elizabeth Chang
Bruno Eicher
Christoph Franzgrote
Aloysia Friedmann
Conrad Harris
Gregor Kitzis
Fritz Krakowski
Elizabeth Lim-Dutton
Heidi Modr-Weimar
Rebecca Muir
Sara Parkins
Sarah Schwartz
Laura Scanton-Finn
Peter Weimar

VIOLA

Louise Schulman*
Ronald Carbone
Stephanie Baer
David Cerutti
Roanld Lawrence
Lois Martin
Nardo Poy
Ann Roggen

CELLO

Daire Fitzgerald*
Rosalyn Clarke
Karl Bennion
Arthur Fiacco
Matthew Herren
Ted Mook
Maxine Neuman
Lutz Rath

BASS

John Feeney*
Melanie Punter
Gregg August
John Carbone
Brian Cassier
Jordan Frazier

FLUTE

Elizabeth Mann*
Sheryl Henze
Timothy Malosh

OBOE

Stephen Taylor*
Melanie Feld*
James Roe

CLARINET

William Blount*
Gerhardt Koch*
Meryl Abt

BASSOON

Dennis Godburn*
Thomas Sefcovic
Marc Goldberg

HORN

Stewart Rose*
Chris Komer
John Smith
Scott Temple
David Wakefield
Michael Ishii

TRUMPET

Carl Albach
Kevin Cobb
Susan Radcliff

TROMBONE

Michael Powell
Kenneth Finn
Michael Hosford
John Rojak

TUBA

Kyle Turner

TIMPANI

Maya Gunji

PERCUSSION

Lynn Bernhardt
Barry Centanni
Erik Charlston
Norman Freeman

HARP

Sara Cutler
Grace Paradise

KEYBOARD

Elizabeth DiFelice

* Member of St. Luke's Chamber Ensemble

METALLICA STAFF

Production Consultant
Tour Manager
Band Security
Production Manager
Backline/Bass Tech
Backline/Guitar Tech
Backline/Guitar Tech
Backline/Drum Tech
Monitor Engineer
Ass't Sound Engineer
Production Ass't
Wardrobe
Dressing Room
Stage Mgr/Carpenter
Carpenter
Rigger
Equipment Transport
MetClub Rep

Dan Braun
Patrick Ledwith
Gio Gasparetti
David Stallbaumer
Zach Harmon
Andy Batty
Justin Crew
Flemming Larsen
Paul Owen
Richard DiSanto
Diane Eichorst
Alie Amato
Kristine Wunschel
Rob MacKenzie
Joe Campbell
Ken Mitchell
Jimmy Schein
Niclas Swanlund



Live Concert Sound Engineer
Michael "Big Mick" Hughes

Concert Lighting provided by
LIGHT & SOUND DESIGN
VARI*LITE PRODUCTION SERVICES

Staff:
Doug Brant
Justin Collie
Mario Corsi
Zack Guthmiller
Mathew Hamilton
Rob Kerwath
Cindy McKinzie
Alan Schwartz
Mike Tengdin

Concert Sound provided by
SSE HIRE
AUDIOTECH
THUNDER AUDIO

Staff:
John Bell
Ray Breen
Steve Dando
Joseph Leany
Garry Robbins
J. Vito Tanasi
Andy Yates

Concert Recorded by
Randy Staub

Orchestra Mixed By
Joel Iwetaki

Live Radio Broadcast/Webcast by:
SFX Radio Network/The Album Network/Live on Line

MICHAEL KAMEN STAFF

Musical Assistants to Michael Kamen
James Brett & Michael Price

Orchestrations by
Blake Neely, Robert Elhai, Brad Warnaar,
Jonathan Sacks, Geoff Alexander,
Pete Anthony, Bruce Babcock,
Chris Boardman, Ted Allen

Music Preparation by
Vic Fraser
Management
Robert M. Urband for Sound Image Network
Coordinator
Sandra Cortez
Assistant to Mr. Kamen
Deborah Jones

METALLICA BUSINESS MANAGEMENT

L. Fred Duffin, Joni Soekotjo,
Lara Michele (Provident Financial)

METALLICA MANAGEMENT

Q PRIME, INC.

Peter Mensch
Marc Reiter
Tony DiCioccio
Sue Tropio
Michael Caldarella
Linda Adams
Cliff Burnstein
Gayle Fine
HM Wollman
Shana Elson
Warren Christensen
Erica Collins

METALLICA LEGAL

Debra MacCulloch, Peter Paterno
(King, Purtich, Holmes, Paterno & Berliner)

METROPOLITAN ENTERTAINMENT GROUP

President & Chief Executive Officer
John Scher
Senior Vice President
Debra Rathwell
Producer
Wayne T. Goldberg
Marketing
Jim McDonald
Production
Rob Brenner
Ticketing
Derek Tucker
Security
Ken Viola